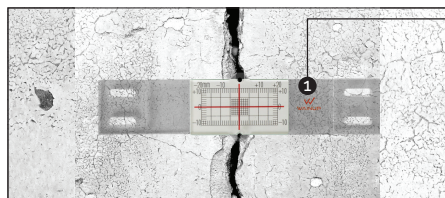




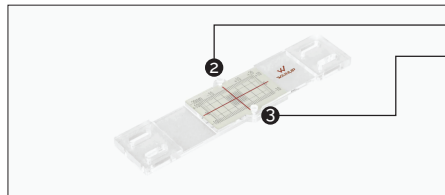
Crack Gauge Instructions

Crack Gauge Instructions for use

Used to monitor the movements of horizontal or vertical cracks on flat surfaces.

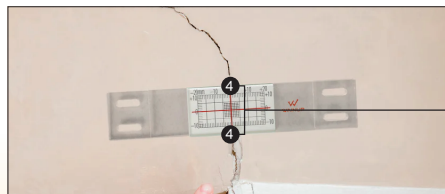


➔ **1.** Position the crack gauge on the crack with the Wainup logo facing is on the right side of the crack.



➔ **2.** Attach the screw or epoxy.

➔ **3.** Once dried out the epoxy, take off the pins and be ready to monitor.



➔ **4.** As the crack widens or narrows, the red crosshairs will move along the scale to show the change.

➔ **5.** Document the measurements.

Further Information

Visit our website for additional crack monitoring products and accessories or talk to an expert to assist with your crack monitoring. You can also download the crack monitoring record sheets if you need additional copies for longer term monitoring.

For all the other inquiries call or mail us to speak with a member of our wainup team

☎ (814) 492-4687

✉ info@wainup.com

🌐 www.wainup.com



✉ info@wainup.com

🌐 www.wainup.com